



SCRATCH REMOVAL IN

5
STEPS

REMOVING GLASS SCRATCHES

SAW360 system

Technical Service Training



Scratch Away[®]

STEP 1: PREPARE & DIAGNOSE

> Preparation



Cleaning

Before you start with the Scratch A Way scratch removal you must first clean the glass thoroughly. This can be done very good with a glass cleaner (A suitable shammy is included).

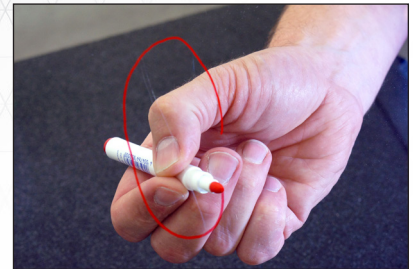


Diagnose

The magnifying glass can be used for determining the type of the scratch. The magnifying glass magnifies the image 30 times. The magnifying glass first has to be folded open and can be focused using the rotary knob.

We differentiate two types of scratches:

- A. Surface / Scuff mark scratch**
- B. Heavy / deep scratches**



Mark

If possible, mark the scratch(es) at the back of the glass with the marker supplied.

STEP 2: JUDGING THE SCRATCH

> Judge if the type of scratch is repairable or not.



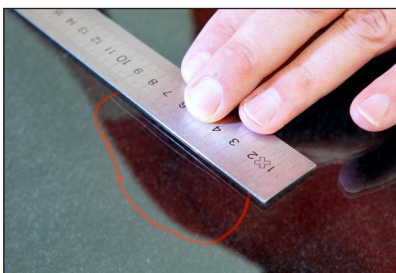
Surface / Scuff mark scratch

Removal of surface scratches is possible with the **SAW360 System** or the **AIR ECO System**.

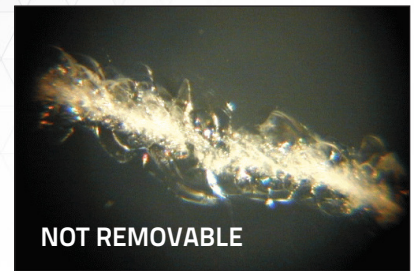
This photo shows a surface / scuff mark scratch. With this type of scratch, removal work can be carried out directly by using the fine polishing disc. 90% of all scratches are surface / scuff mark scratches, caused by glass touching glass.

TIP: When a scratch is between the two pictures above, first use the Metal disk Velcro and the Pasta Red Heavy before you finish with the normal Fine Disk Velcro.

Beware: it will take serious more time to remove the scratch.



TIP: Work in parts if the scratch is longer than 7 centimeters



Heavy / Deep scratch

This photo shows a heavy / deep scratch. With this type of scratch, there is damage to the glass surface in addition to the scratch (scallops).

In this case there is actually glass missing. Unfortunately this missing glass cannot be added so the only option to optically take the deep scratch out is by first grinding more material away, until you are at the same depth as the scratch.

From there you start lapping and polishing the surface transparent again.

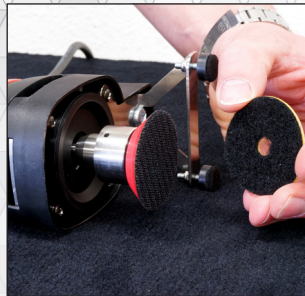
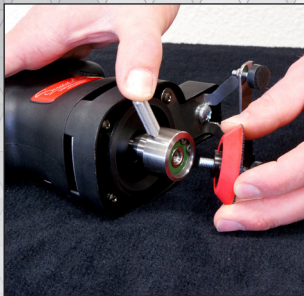
For this type of removal the Scratch a Way Red&Pink paste together with our steel pads and fine polishing disk will do the job.

Note: this type of scratch is NOT removable without disturbing the surface!



STEP 3: PREPARING FOR OPERATION

> SAW 360 SYSTEM



1] Mount the disc bearer on the machine using the supplied blocking pin. By blocking the driving mechanism with the blocking pin, the disc bearer can be screwed in.

Attention! Remove the blocking pin before using the machine.

2] Fasten the fine polish disc to the basic head.

Attention! This should happen in a centered manner

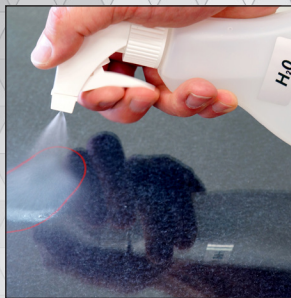
Put the plug of the machine into a socket. The mains voltage has to comply with the power indicated on the type plate!

Note that the temperature of the glass is almost the same as that of the environment.

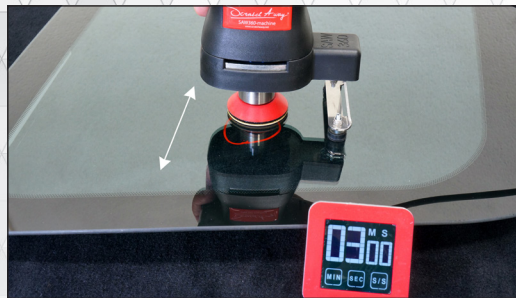
Switch the machine to medium level (for instance between level 3 and 4)

STEP 4: REMOVING THE SCRATCH

> SAW 360 SYSTEM



Moisten the scratch with a spray bottle filled with water.



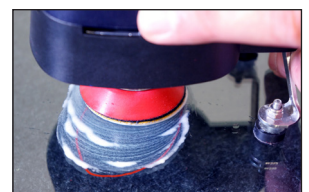
- The surface being polished must be wet to release the polishing agent from the pad and to prevent overheating.
- Place the polishing head on the scratch.
- Start the machine.
- Glide the machine up and down slowly over the scratch.
- The pressure applied should not be too strong (The polishing disk should make ± 65 rpm on the glass).
- The polishing disc needs to be able to spin freely. The disk will make the water into a foam when the correct temperature is reached.
- A consistent and even pressure has to be applied to the polishing disc.
- Spray frequently to maintain a wet work area.
- Keep the scratch exactly in the middle of the disc.
- Avoid working at an angle.
- The polishing disc always has to stay on an even plan with the surface of the glass.
- To avoid overheating or running dry, do not polish over the scratch for more than 3 minutes at a time. The ideal temperature is around 65 degrees Celsius.

Roughen the pad with fine abrasive paper when the pad is dried-in, to disclose and optimize the working of the components locked up in the pad.

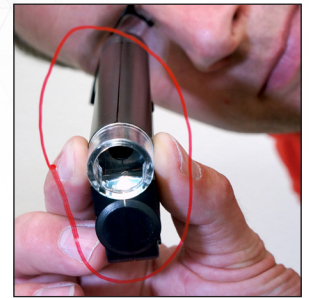


Attention! Using too much water will stop the effect of removing the material. Using less water will make 'cloudy circles' or white strokes. Try to get a milky liquid while working.

TIP: It's possible to work without the red rubber cap if you want to see immediately what you are doing



STEP 5: FINISHING AND CLEANING



- After polishing, clean the area with a cleaner.
- Inspect closely.
- If the scratch has not yet been fully removed, repeat above actions till the desired result is reached.

Inspect the end result.



PROFESSIONAL TIPS FOR A PERFECT RESULT

Care for a clean working environment

Work in processes

Respect timetables

Use official Scratch-A-Way products

Be gentle with disks in favour of end result

Be critical

Train yourself regularly

SUCCESS!

**Do you want to have
a personal training?
Call your distributors
or contact our headoffice.**

www.scratchaway.net



Scratch Away[®]