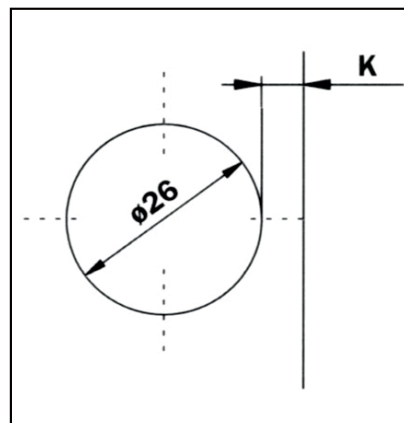
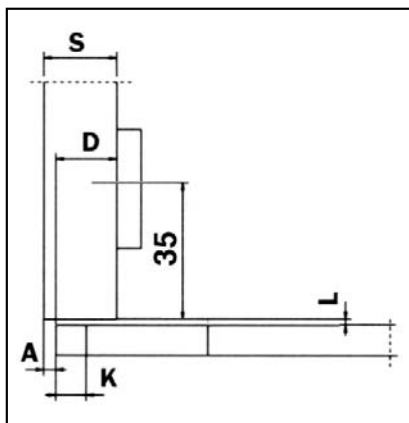


Technical drawing • Technische tekening • Dessin technique

Article 429.CER200

Artikel

Article



$A = S - 20.5 \text{ mm}$
 $K = \text{au max./Max. } 7.5 \text{ mm}$
 $L = \text{au min./Min. } 0.5 \text{ mm}$
 $D = \text{au max./Max. } 20 \text{ mm}$